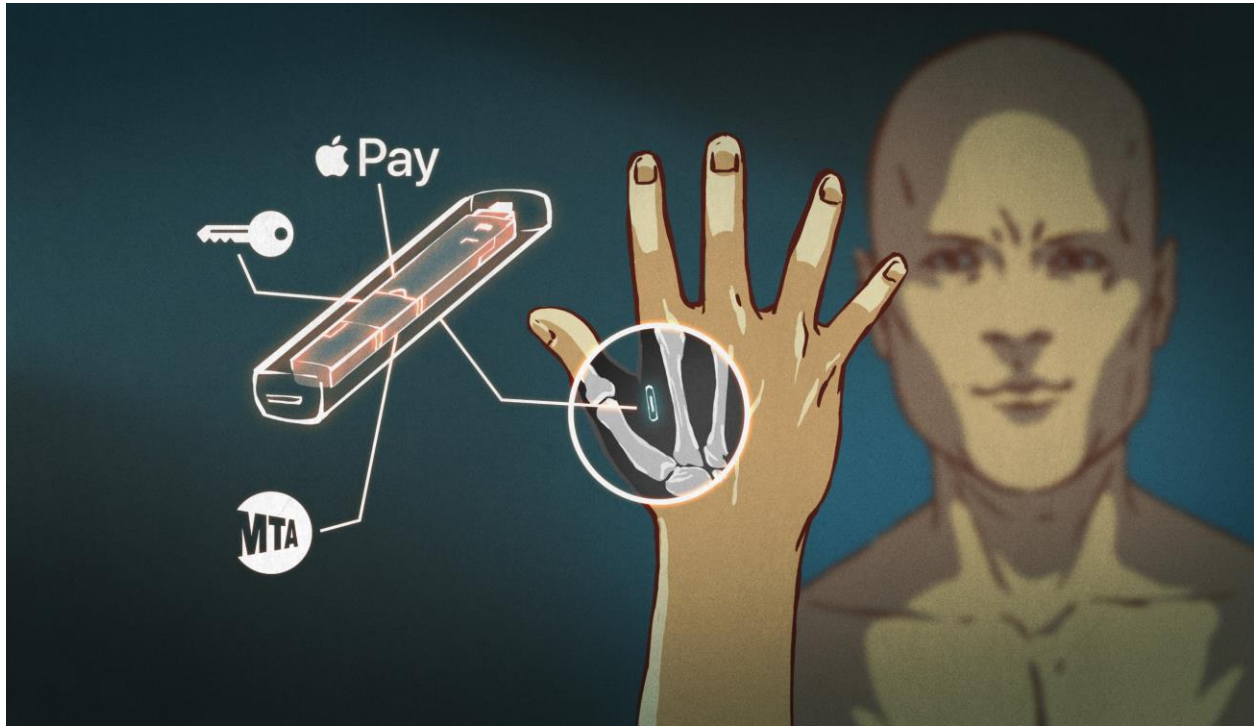


Video 193: Q&A Session #41

by Wes Penre and Ariel Glad, November 18, 2019

The video to this transcript can be found on our YouTube channel:

https://www.youtube.com/channel/UC0RVai_3hFfj75juEEcwNog/videos



It feels like a long time since we had a Q&A, so here we go! Please submit your questions at wespenreproductions@gmail.com. We are shortening and modifying certain questions in our Q&A to be able to include more questions, but we never do it out of context.

QUESTION #1: We have one genuine soul, which is a fragment of the Queen’s Oversoul. Then we have the artificial soul that comprises of many splinters of what is called Enki’s Oversoul. In the beginning of your article “AI is not what people think it is,” you write about thousands upon thousands of small fires that make up the soul. Does this apply to both kinds of souls- the genuine and the artificial? Are

Video 193: Q&A Session #41

the fires you write about made up of the real soul or the artificial soul? Are both souls equally fragmented? Or do we each have one fragment of the Queen inside us versus billions of splinters of the artificial soul?

ANSWER: Good question! The genuine soul comprises of trillions of small fires, just like our bodies consist of trillions of small cells. You can split these genuine fires and nano-travel across the multiverse, while still stay put in another location with training (this is what remote viewing is about, by the way, as well as bi-location). The artificial soul, as we call it, is the overlays/false light-bodies that are of the Construct/Matrix/Patrix. We don't know 100% what these overlays consist of, other than that they work like "containers" for our soul energy, and they become particularly active in the astral. Most of them are harvested after death. It's in the emotional light-body that our trauma and emotional wounds accumulate and become subconscious, making us "reactive" rather than conscious. These layers are synthetic in order to house our soul energy that we're then stripped off in the Afterlife. When we experience trauma, our genuine soul dissociates/splits, and in this construct, these fragments are then contained in the synthetic emotional body in a split form. Without these overlays, we would still split during trauma, but we would reintegrate instantly when the trauma is over. The trauma in the emotional body then transfers over into the physical body, resulting in physical sensations and even physical illnesses.

In addition; when we speak about "fires", what we are talking about are the etheric counterparts to the physical cells in the body. Picture this in your mind, if you can...Imagine a single physical cell. It could be a skin cell, or any other cell in the body. Now, imagine that there is a component of that physical cell that is nonphysical. We can't "see" that part. In the same way that our physical body has an attached soul. These invisible parts of each cell are what we call "fires". All these fires, joined together, make up what we call the "soul", in the same way that all the physical cells join together to make up what we call the physical body. Our artificial soul overlay is also composed of these fires – our fires – but have been arranged in a specific way that our original soul is not. These fires in this artificial overlay have had "things" added to them.

Video 193: Q&A Session #41

Think of it like a cell having its genes manipulated to create certain mutations which could be beneficial, as in disease resistance, or harmful such as birth defects. These manipulations to our fires, when joined together, create this overlay through which most humans on the planet are operating their body. This overlay, with her fires in such an arrangement, allows for certain emotions, feeling, and behaviors to become dominant. In other words, the soul is developing your personality. Certain personality traits have been genetically altered at the soul, or fire, level to be dominant. It is this manipulation that we are encouraging others to resist and work on overcoming to allow the original fires to operate as the original soul structure. These fires come directly from our Divine Mother. When we begin to operate more and more from our original soul, our energy and experience go back to Her. When we only operate through our manipulated overlay (artificial soul), our energy and experience are intercepted and go to En.ki, all of which HE collects and stores.

QUESTION #2: Regarding a potential ability to exit the matrix within a biological body... You write: “Just make sure you are not replacing your body parts with nanobot based organs!” Is it not true that nanobots are sprayed from the sky and some accounts state that nanobots are contained in medication, vaccines and even industrially produced food items? Then all our organs would already contain a certain amount of nanobots. I have seen enlarged pictures of Morgellons and there was one that looked like an alien mothership with small spaceships surrounding it and suggests that there is even a war inside our bodies taking place where our blood cells and body cells are under attack. Are not viruses geared toward successively “taking” over entire body cells, destroying them and spreading throughout the entire body?

Viruses are said to produce autoimmune diseases where the body supposedly attacks itself. But according to Anthony William this is not true, as the body never attacks itself. It rather implies that the body attacks the cells that are compromised by invading viruses. If you look at some viruses under a microscope they look like artificial constructs, technical devices.

How does that affect our ability to leave the **matrix**?

ANSWER: More good questions! This is our understanding: yes, nanobots are distributed in those ways, and they do enter our bloodstream as intended. Thus, our

Video 193: Q&A Session #41

bodies inevitably contain bots. However, even with these bots activated, they don't replace organs—this is something that needs to be done surgically. Hence, we can still die and are not immortal yet even though our bodies contain nanobots. We need to make sure we are not transplanting our vital organs into nanotechnological organs because we want to make sure we age and die one day. We have also seen pictures of these bots, and they can certainly be described the way you do!

Based on the research and information we have received, we should still be able to exit the Patrix after the body expires, but we also need to keep ourselves informed about the technological development and make conscious choices based on what we learn. So long as we can see that our bodies are aging, we are good. If our bodies don't age at all past the age of 30, we might want to be concerned...

QUESTION #3: My twin flame and love of my life died in my arms six months ago of an asthma attack. I have been diagnosed with cancer with no cure, no chemo, no radiation. I want to know if it's possible to find my love from the astral and escape the Patrix/Matrix with her and other soul family that I can find. I am ready and actively focusing on this. I also have a Mother and Brother that just passed. Can their souls be saved?

ANSWER: First, you have our deepest empathy and compassion for what you've gone through and are still going through. It's heartbreaking! This is our advice: your twin-flame and your other deceased family members are more than likely reincarnated again. If these people have passed through the tunnel of light, they have moved into the afterlife portion of our construct. It is a one-way direction. Once you move through the tunnel of light, you can't decide to turn around and come back out the way you came. Once you are in, you're in. The way out of this system is located immediately after death and BEFORE we move into the tunnel of light.

But here is the solution, in our opinion: when it's your turn, go through the Grid, as we suggest. Then, if we were you, we would think ourselves to Orion to talk to the Queen and the Council. They will welcome you with open arms! Then, we would present our case and tell our story—both about our relatives and the story of Earth, as we have experienced it. Then, we would ask, "What is the solution? How can we assist the human soul group?" We believe that this will be our task after

Video 193: Q&A Session #41

we've exited—to help assisting the remainder of the Namlu'u/genuine humans. We will work out a solution with Orion. Here, in this Construct, there is unfortunately not much you can do, as we see it. As Einstein said, paraphrased: “A problem cannot be solved at the same level it was created.” The problem is this Patrix! We need to step out of it in order to solve the problem. Hope this helps!

QUESTION #4: Please clarify between the title "En.ki" [and] the name of En.ki. We keep using the name En.ki in our conversations, and we've heard of the title En.ki which could be occupied by different beings.

ANSWER: There is no name En.ki--it's just a title or "profession," like "carpenter" or "baker," etc. are for us humans. If you're a baker, that's what you are while you're baking. Then, you change jobs and become a secretary, then your "title" is "secretary." This is how it usually works in the KHAA. They don't have names like we do--they mainly go by titles. Ninurta is ONE title, for example, but when he is in charge of the MIKH-MAKH Guards of Orion, he is Michael (M.I.KHAA.EL or MI.KH.AYA.EL), and so it goes. In the KHAA, beings recognize each other by soul signatures, not names.

En.ki means Lord of Earth (title). In the beginning of this construct, En.ki was the Lord of Earth, but now Marduk is the Lord of Earth (Satan), so he can use the title En.ki. To avoid confusion as much as possible; when we use the title En.ki in our videos and in the WPP, we refer to Ninurta's brother, not Marduk.

QUESTION #5: What do you suggest to those who cannot partake in your members/Patreon group, due to financial circumstance but, still love your work and all that you do?

ANSWER: The best thing we can recommend is to visit our forum (type “Wes Penre Productions forum” in Google). There is an open section for the public that does not require membership to participate.

QUESTION #6: Can narcissism be a trait that people acquire? I know a few narcissists but it's hard to believe that they are not Spirited. You mention that everyone is a narcissist on a scale of 1-10. The people I am talking about may be level 7-9, so what about people within this range?

ANSWER: Yes, people can acquire very narcissistic traits without being full-blown narcissists. We can't tell you what to do about those relationships in which people would score on the high end of your scale. That must be an individual choice for you. In the end, it really doesn't matter if someone is diagnosed with a personality disorder or not. You do not need the validation of having a label for someone to justify making the decision that a relationship is harmful to you. If the relationship is toxic, then it is toxic. It doesn't need a label for you to give yourself permission to make that decision.

Our definition of a REAL narcissist is a person who consists ONLY of the artificial overlays described in *Question #1*—they have no genuine soul. These people become abusive vampires, living on our genuine soul energy out of necessity; for their own survival. One way to distinguish between a genuine narcissist and someone with narcissistic traits is: will the person change to the better when confronted with destructive behavior, or will they pretend or refuse to change, and then they always go back to old, destructive manners? If they genuinely change, they are not true narcissists. This is ONE useful **indicator**.

QUESTION #7: In regards to reincarnation and the astral realm; if the soul chooses to go through the Tunnel with the white light at the end of it, will they, after have gone through the Between Lives Area, etc., most likely relive the most current lifetime all over again, incarnate into a different time and location on Earth or possibly elsewhere in the Milky Way Galaxy or shot down (with technology) into a random baby body? From having read your work and others, some souls actually do have a choice to incarnate into a particular family line so that they will carry out their goals a lot easier, i.e. incarnating into a rich or wealthy family. Would you say that all the above are plausible?

ANSWER: It is our understanding that the soul will repeat the most current lifetime over and over to balance out there “karma,” a principle the Overlords invented in order for us to agree to take a new body. In regression therapy, we hear a lot about soul groups and how some souls reunite with their soul group in the Between Lives Area (BLA). On some occasions, this probably happens—members of the “soul group” are the souls we interacted with in our previous incarnations. In the BLA, souls sometimes decide to change positions in the next incarnation;

Video 193: Q&A Session #41

mother becomes daughter, etc. In reality, this will not happen. If you are “Jim” in this incarnation, you will be Jim in the next one, too, trying to work out your karma and “evolve.” The “reward”—eventually—will be that you “graduate” from the Earth plane and become a spirit guide or a teacher in the astral, but under strict supervision.

However, we will not say that anything is impossible, because we do not know. So, our answer to your question regarding if the scenarios you’ve described are plausible is yes.

QUESTION #8: I was reading your forum and came across the harrowing future most of us will face. It is quite saddening to read what the new world, or Singularity will be like, and what life will be like for those, us, who don't want to join. It would be quite hard since all food, travel, jobs; basically everything will only be accessible through the Singularity. So, when having a chip is mandatory, could we actually get one to live the rest of our lives comfortably, but still remain aware of the evil doings of the Singularity? Also, if we retain our biological bodies and intention of exiting the grid, would having one little chip still lock us in despite our strong knowledge and intentions?

ANSWER: No, having a chip implanted would not prevent you from exiting when you die. That chip is part of the physical body, which you will discard at the moment of death. You will not take your biological body with you. The decision to receive some kind of biometric identification must be an individual choice and one everyone must make when the times comes. That time is not here, yet, though, so we say enjoy life to your maximum fulfillment and create the life you want in the meantime.

If nothing else, it’s ONE step toward the Singularity. What about the step after that? We need to use our discernment and say “stop” when we feel it’s appropriate. Otherwise, they will eventually get us trapped.

QUESTION #9: If we are split into many fires and have them in different timelines, what decides in which timeline we will be aware? I mean I am aware here and now that I am me, and if it’s true that we are gonna live the same life over

Video 193: Q&A Session #41

and over again, will I experience that life like " me, " Nina again? Why do I experience this life and not another, or am I, but not realizing?

ANSWER: It's because the part of your split soul that is "Nina" is focused on being Nina. You're incarnated in a body called Nina within a certain time-frame, so that's where all your attention goes—to live the avatar life as Nina. If you have another split in the 1700s called Joe, he will be completely focused on being Joe with all the unique experiences Joe is having. So, "attention goes where energy flows." We hope this makes sense. Joe is now a separate soul from Nina, as if he'd never been part of you. Therefore, as we now see it, there is no use in trying to retrieve Joe's soul energy. It would be like trying to retrieve the soul energy from a random person called Mary, who has nothing to do with you. Joe doesn't, either; not anymore.

One could say this has created an amnesia veil or barrier which makes us unaware of any other lives that we may be living, concurrently. You may get some "bleed through" from other lives which may be interpreted as some inherited fears, talents, or other personality characteristics for which there are no explanations. Someone who is born with a phobia of the color yellow, for example, may be experiencing a bleed through from a trauma experienced by another life experience. Some people are born with unusual birthmarks in the same place they were injured in another life. Things like this do occur and some people do have some awareness of another life. Usually, the more traumatic the event, the more likely it may be to impact you across the lines of time. Why do some seem to have that connection and others do not? We don't know. We would take that as a good sign that you have not had any extremely traumatic events that would leave its stamp or impact on your current life.

Consider watching this video to the final end, so you don't miss out on our video mini-series about the planet Tiamaat and the story of humankind. If you missed earlier episodes, the mini-series started with Episode 1 at the end of Video 187. There will be one episode at the end of each of these YouTube videos from hereon. Hope you'll find them interesting!

Video 193: Q&A Session #41

